

3M

Filtek™

**Supreme XTE
Universal Restorative**



**Dentists everywhere
love using it
anywhere.**



600 million reasons you can be confident using it anywhere.

Bring unsurpassed esthetics and outstanding strength to every restoration—anterior or posterior—with 3M™ Filtek™ Supreme XTE Universal Restorative.

As you'd expect from the global leader in esthetic and restorative technologies, 3M's TRUE nanotechnology provides superior wear resistance and gloss retention ... so your restorations will last and look beautiful, too.

That's why dentists around the world have made it their composite of choice for **more than 600 million restorations*** ... and counting.



3M™ Filtek™ Supreme XTE Universal Restorative

Simplify your practice with the composite that does it all.

Any place: anterior or
posterior. Any class.



A versatile choice is a smart choice.

Unsurpassed esthetics

- Excellent polish retention
- Wide range of shades and opacities
- Natural-looking fluorescence

Simple to use

- Exceptional handling
- Natural-looking body shades for a simple, single-shade technique
- Capsules and syringes are color coded by opacity

Durable in anterior and posterior use

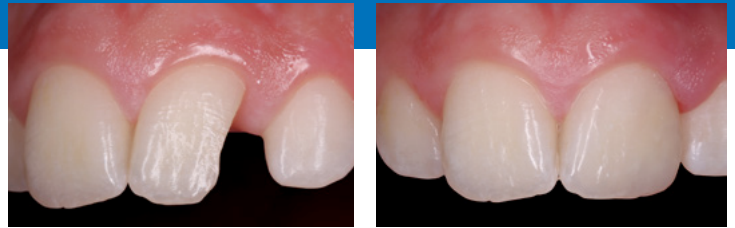
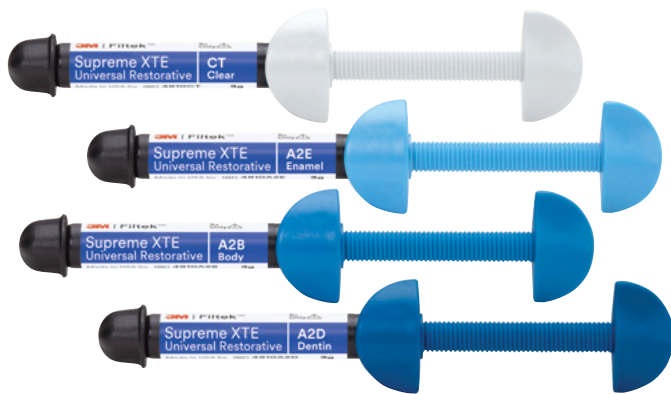
- Excellent wear resistance
- Outstanding strength
- High radiopacity

Always beautiful

When you want to elevate your artistry, here's your dream palette.

When it comes to beautiful, natural-looking results, there's nothing like 3M™ Filtek™ Supreme XTE Universal Restorative. Whether you specialize in esthetic dentistry or create esthetic restorations in specific cases, we have your dream palette.

Our **36 beautiful shades and 4 opacities** allow you to match any patient's dentition and create restorations that are virtually undetectable using a multi-shade layering technique.

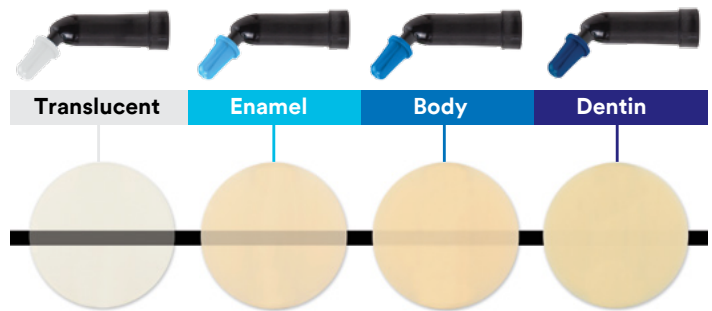


Anterior restoration created using three shades (A3D, A3.5B, A1E) of 3M™ Filtek™ Supreme XTE Universal Restorative.

Photo courtesy of Dr. Gabriel Krastl, Department of Periodontology, Endodontics and Cariology, University of Basel, Switzerland.

Four Opacities

Translucent, Enamel, Body and Dentin designations refer to differences in opacity.



Syringes and capsules are color coded by opacity—Translucent, Enamel, Body and Dentin—and bold lettering makes shades easy to identify.

Unsurpassed polish retention—a difference you can see.

The initial gloss of most restoratives can be very impressive, but you want a polish that lasts. Thanks to 3M's TRUE nanofiller technology, Filtek Supreme XTE restorative polishes easily and retains its natural gloss better than other composites—even a microfill.



Polish you can see. Side-by-side photos compare the polish retention of leading restoratives to that of 3M™ Filtek™ Supreme XTE Universal Restorative after 6,000 cycles of simulated toothbrushing.

Beautifully simple

When you want a simple solution, you'll love this.

Most restorations are made with just one of eight Body shades. By using 3M™ Filtek™ Supreme XTE Universal Restorative, it's truly possible to create natural-looking restorations using a simple, single-shade technique.

Dentists say they love the way Filtek™ shades blend with surrounding dentition. Add to that the high gloss provided by 3M's TRUE nanotechnology, and you'll find it really easy to satisfy patient expectations.

8 "Go-to" Body Shades

Filtek™ shades match the VITA classical Shade Guide. An A2 is an A2, so esthetics are beautifully predictable.



Dentists rate the handling as "ideal."

It's easier to achieve the restorative result you want when the composite handles well. For example, the improved handling of our Translucent shades makes it easier to create lifelike incisal edges.

All of our shades offer excellent handling. In fact, in a field study,* dentists rated Filtek Supreme XTE restorative as "ideal" on viscosity, stickiness, flow and ability to hold its shape.

*3M internal data



Simply durable ... anywhere

Beautiful ... yes. And it's strong enough to use anywhere.

Think how much more efficient your day would be if you didn't have to decide which composite to use in each clinical situation. Our TRUE nanotechnology gives 3M™ Filtek™ Supreme XTE Universal Restorative remarkable strength for anterior and posterior use.



Amalgam filling replaced by 3M™ Filtek™ Supreme XTE Universal Restorative in a posterior restoration.

Photo courtesy of Dr. Grant Chyz.

Excellent wear resistance

The lower the wear rate of a composite material, the better its wear resistance. In an in vitro 3-body wear test, Filtek Supreme XTE restorative had the lowest wear rate of all leading composites tested.

Source: 3M internal data



3-Body Wear

Normalized wear rate

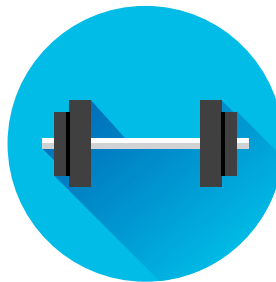
3M™ Filtek™ Supreme XTE Universal Restorative.....	1.0
Grandio®SO	1.4
EsthetX® HD.....	1.6
TPH Spectra® HV	2.6
Tetric EvoCeram®.....	3.4
Herculite™ Ultra	2.5

Over 200,000 cycles

Outstanding strength

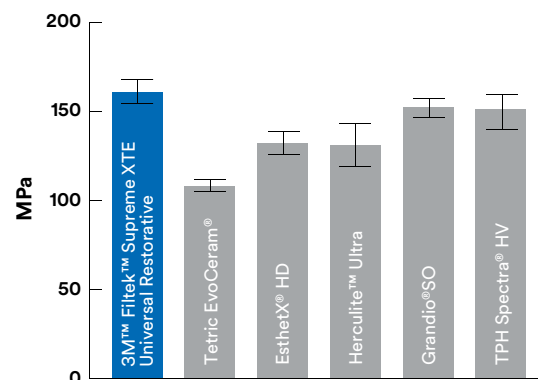
In a test comparing leading dental composites, the flexural strength of Filtek Supreme XTE restorative proved better than that of EsthetX® HD, Herculite™ Ultra and Tetric EvoCeram®, and comparable to other composites tested.

Source: 3M internal data



Flexural Strength

Flexural Strength



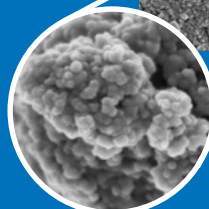
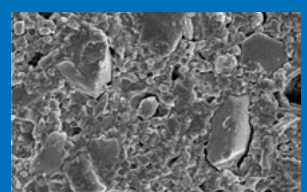
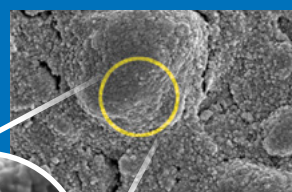
3M's TRUE nanofiller technology leads to outstanding polish and strength.

The significant distinction between 3M™ Filtek™ Supreme XTE Universal Restorative and micro- and nanohybrids is that our nanoparticles are uniquely formed in the nano size range and are not the result of a grinding process. Some nanoparticles are fused into nanoclusters, which shear at a rate similar to the wear of the surrounding resin matrix during abrasion, such as toothbrush abrasion. That's why restorations made from Filtek Supreme XTE restorative maintain a smooth surface gloss for superb esthetics.

The nanoclusters have a similar size range as fillers found in the hybrid composites and provide for high filler loading. This results in excellent physical properties and wear resistance that are ideal for posterior restorations.

3M™ Filtek™ Supreme XTE Universal Restorative nanocluster

Leading competitive composite



100K magnification of nanocluster

SEM photos courtesy of Dr. J. Perdigao, University of Minnesota.

You may already know the benefits of working with 3M™ Filtek™ Supreme XTE Universal Restorative. What you may not know is how easy it is to move from a single-shade to a dual-shade technique. The 3M™ Shade Selector Wheel simplifies the selection process and serves as a guide for placing one to four shades of composite. It is included in every dual-shade kit and professional kit.



Ordering Information

Although Filtek Supreme XTE restorative is available in 36 shades and opacities, the **8 Body shades** highlighted below will meet the majority of your needs for creating natural-looking, single-shade restorations.

Item #	Product Information
4911S	3M™ Filtek™ Supreme XTE Universal Restorative Single Shade Intro Kit—Capsule Kit includes: 40 – 0.2g capsules; 20 each of Body shades A2, A3; Technique Guide; Instructions for Use
4910S	3M™ Filtek™ Supreme XTE Universal Restorative Single Shade Intro Kit—Syringe Kit includes: 4 – 3g syringes; 2 each of Body shades A2, A3; Technique Guide; Instructions for Use

REFILLS—3M™ Filtek™ Supreme XTE Universal Restorative

Refill	Item #	Item #
BODY SHADES	SYRINGE	CAPSULE
A1B	4910A1B	4911A1B
A2B	4910A2B	4911A2B
A3B	4910A3B	4911A3B
A3.5B	4910A3.5B	4911A3.5B
B1B	4910B1B	4911B1B
B2B	4910B2B	4911B2B
C1B	4910C1B	4911C1B
C2B	4910C2B	4911C2B
A4B	4910A4B	4911A4B
A6B	4910A6B	4911A6B
B3B	4910B3B	4911B3B
B5B	4910B5B	4911B5B
C3B	4910C3B	4911C3B
D2B	4910D2B	4911D2B
D3B	4910D3B	4911D3B
White	4910WB	4911WB
Extra White	4910XWB	4911XWB
DENTIN SHADES	SYRINGE	CAPSULE
A1D	4910A1D	4911A1D
A2D	4910A2D	4911A2D
A3D	4910A3D	4911A3D
A4D	4910A4D	4911A4D
B3D	4910B3D	4911B3D
C4D	4910C4D	4911C4D
White	4910WD	4911WD
ENAMEL SHADES	SYRINGE	CAPSULE
A1E	4910A1E	4911A1E
A2E	4910A2E	4911A2E
A3E	4910A3E	4911A3E
B1E	4910B1E	4911B1E
B2E	4910B2E	4911B2E
D2E	4910D2E	4911D2E
White	4910WE	4911WE
Extra White	4910XWE	4911XWE
TRANSLUCENT SHADES	SYRINGE	CAPSULE
Clear	4910CT	4911CT
Blue	4910BT	4911BT
Gray	4910GT	4911GT
Amber	4910AT	4911AT

The 8
“Go-To”
Body
Shades

www.3M.com



3M Oral Care
2510 Conway Avenue
St. Paul, MN 55144-1000 USA
Phone 1-800-634-2249
Web 3M.com/dental

3M Deutschland GmbH
Location Seefeld
3M ESPE • ESPE Platz
82229 Seefeld • Germany
Info3MESPE@mmm.com
www.3MESPE.com

3M and Filtek are trademarks of 3M or 3M Deutschland GmbH. Used under license in Canada. © 3M 2017. All rights reserved. All other trademarks are not trademarks of 3M.